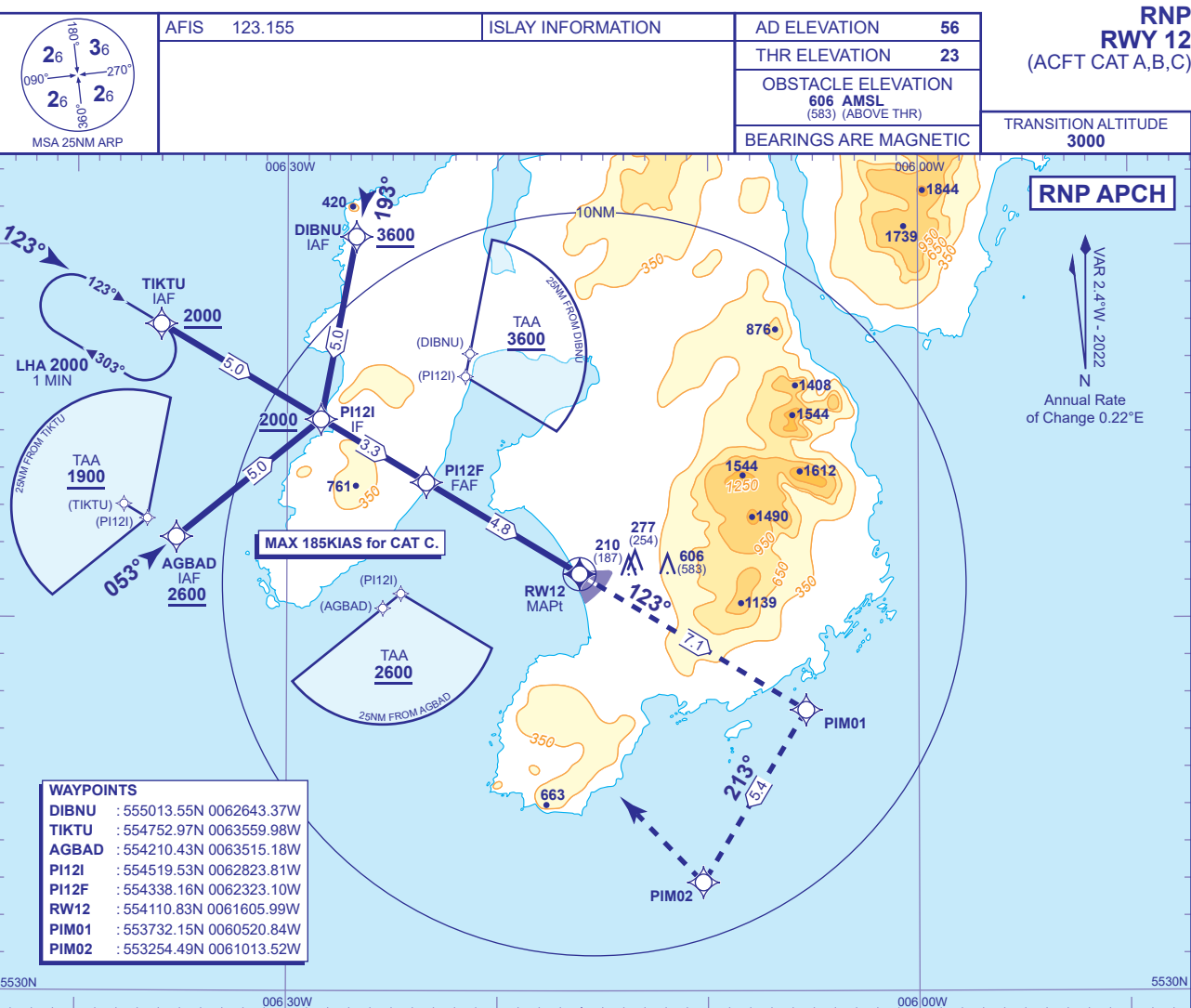
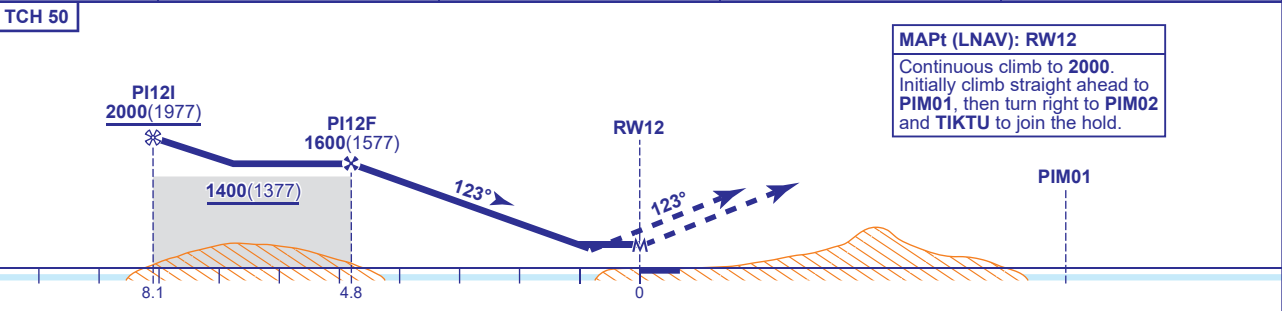


INSTRUMENT APPROACH CHART - ICAO

ISLAY  
RNP  
RWY 12  
(ACFT CAT A,B,C)



RECOMMENDED PROFILE Gradient 5.24%, 318FT/NM				
NM to RW12	4	3	2	1
ALT(HGT)	1350(1327)	1030(1007)	710(687)	390(367)



Aircraft Category		A	B	C	Rate of descent	G/S KT	160	140	120	100	80
OCA (OCH)	LNAV	2.5%	730(707)	730(707)		FT/MIN	850	740	640	530	420
		4.5%	380(357)	380(357)							
VM(C)OCA (OCH AAL)	Total Area	770(714)	1040(984)	1830(1774)							
	150°M clockwise to 035°M	770(714)	770(714)	940(884)							

NOTE 1 Use of this procedure is strictly PPR from the aerodrome operator.  
2 Prior to commencing the procedure, pilots are to broadcast on AFIS 123.155 with flight details and intentions.

CHANGE (3/24): RWY DESIGNATOR.

AERO INFO DATE 15 JAN 24

AD 2-EGPI-8-1